

The new S 43 SX III:

Ease without compromises

- completely equipped and fully operational at an operating weight of less than 32 tons
- standardised chassis frames without axle displacement and Europe-wide valid COC documentation ex-factory keeps acquisition administrative costs down

Delivery note box

The extendable, watertight delivery note box enables quick filling of all documents, giving necessary protection from wind and weather.



- proven SCHWING technology combined with sensible innovations for exceptional reliability, efficiency and performance

Pump kit

Only the SX outriggers by SCHWING allows the longstroke pump kit P2525 with 2.50 m long pumping cylinders to be used in this class of machine, lowering the stroke rate to an unsurpassed level. Just like the maintenance costs.



Concrete valve

The legendary low wear B ROCK valve with its optimal geometry for low-friction concrete flow ensures low service and operating costs. Being fast and easy to clean, the S 43 SX III is quickly ready for the next job.



Supply control

The water box can be filled and emptied, and the water pump, agitator, spray hose, high pressure jet wash and compressor, all controlled via the new standardised supply control. This is the new standard for all SCHWING truck-mounted concrete pumps for greater clarity and ease of operation.



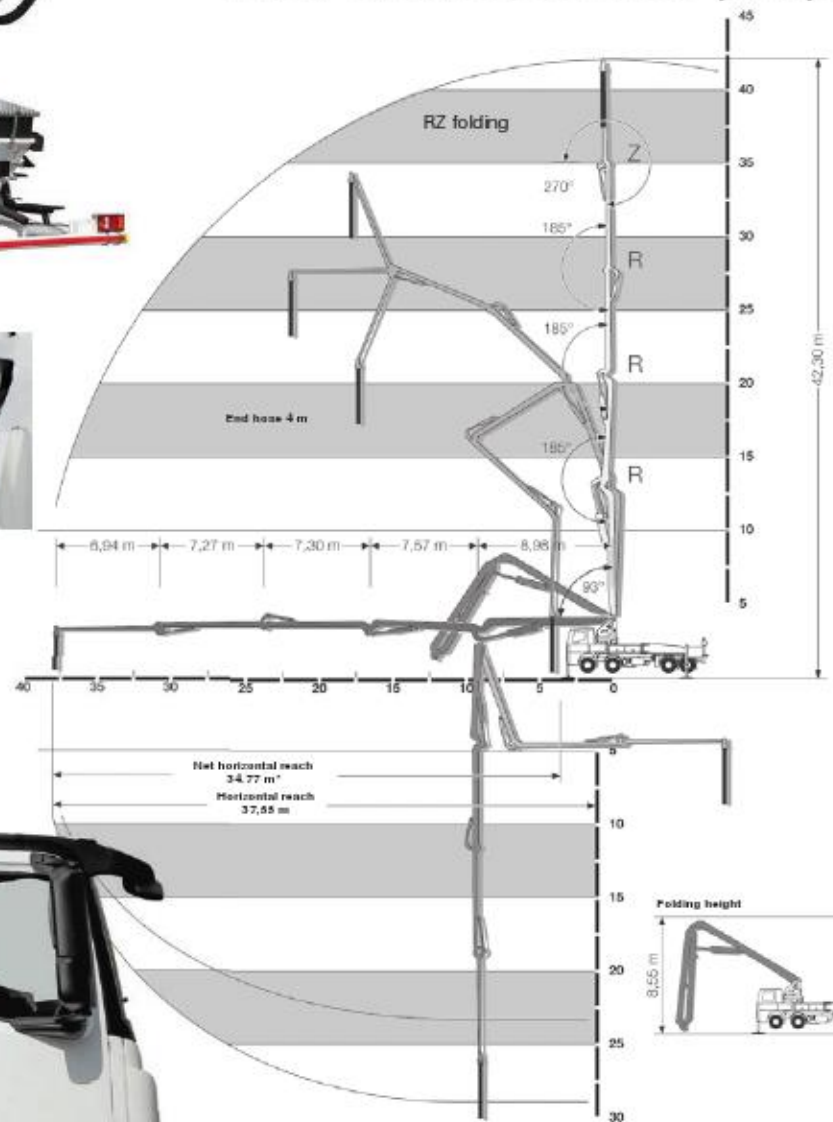
S 43 SX III

Truck-mounted concrete pump



Open hydraulic system

The S 43 SX III open hydraulic system converts the engine power efficiently into pump power with little loss, meaning greater fuel efficiency. It also allows continuous pumping of concrete at maximum power, even in high temperature environments.



*mounted on Mercedes-Benz Arocs



Centre distance < 1.800 mm

SX outriggers

The SX outriggers developed by SCHWING combines high torsional rigidity and excellent stability with minimum space requirement. The protected piston rod and internally laid hydraulic cables prevent damage and reduce service costs. At the same time, the SCHWING SX outrigger is the only system which allows the installation of a low-wear long stroke pump kit P2525.



Control and tool cabinet

The integrated LED lighting in the control cabinet (option), tool cabinets (option) and above the outrigger controls guarantee the S 43 SX III can be set up and operational even in poor visibility conditions.



VECTOR control

The machine operator can inspect machine data, operating conditions and settings on S 43 SX III, changing various parameters, all through the intuitive VECTOR control. The integrated diagnostic system ensures safe operation and also reminds the operator when maintenance is necessary.

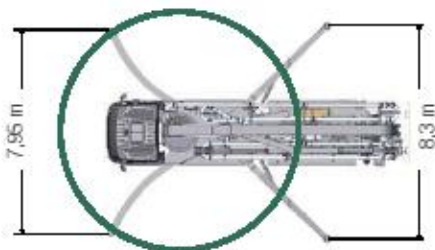


S 43 SX III Truck-mounted concrete pump

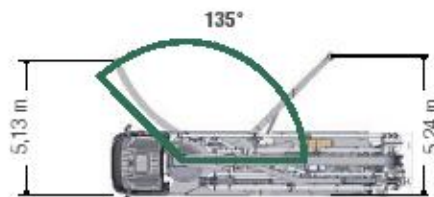
Technical data

Pump unit		P 2023-110/75	P 2023-110/75	P 2525
Drive	l/min	535	636	636
Concrete output max.	m ³ /h	136	161	162
Maximum stroke rate	1/min.	27	32	22
Maximum pressure on concrete	bar	85	85	85
Placing boom		43 RZ		
Pumping line diameter		DN 125		
Length of end hose	m	4,00 (Option: 1,00 m + 3,00 m)		
Vertical reach	m	42,30		
Reach depth	m	29,20		
Horizontal reach	m	37,55		
Net horizontal reach	m	34,77		
Number of boom sections		5		
Height of the inflexion points	m	4,24 / 13,22 / 20,79 / 28,09 / 35,36		
Slewing range		2 x 370°		
Outrigger load, front	kN	240		
Outrigger load, front	kN	240		
Folding height	m	8,55		

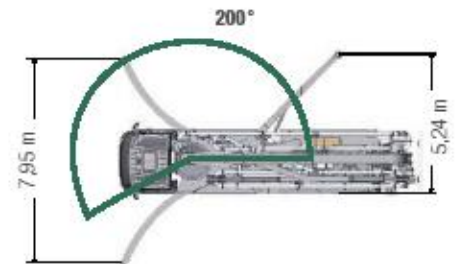
Support images



Full support



One-sided support (EASy)



Partial support (EASy 200)

SCHWING concrete pumps. Efficiency as standard.



SCHWING GmbH
Heerstraße 9-27 · 44653 Heme, Germany
Fon +49 23 25 - 987-0 · Fax +49 23 25 - 72922
www.schwing-stetter.com · info@schwing.de

Stetter GmbH
Dr.-Karl-Lenz-Straße · 87700 Memmingen, Germany
Fon +49 83 31 - 78-0 · Fax +49 83 31 - 78 275
www.schwing-stetter.com · info@stetter.de