

S 38 SX Reptor

Truck-mounted pump



Vertical reach		37.3 m
Concrete output	max.	161 m ³ /h
Pressure on concrete	max.	85 bar



RECORD BREAKING ENGINEERING

The S 38 SX Reptor from SCHWING

The new flexibility

With the S 38 SX from SCHWING, flexibility in the 30 m class is newly defined. The innovative Reptor boom combines exceptionally large opening angles of the boom with the easy to operate roll folding and, thus, provides unique mobility during use. Also no restrictions with the service life and reliability: the S 38 SX renounces experiments in the construction and, however, attains an operating weight of less than 26 t. More flexibility with unchanged high value retention.

Boom

The new Reptor boom with the large opening angles of its boom elements and roll folding, is easy to operate even in demanding applications. Thus, it is an ideal tool for pump applications in halls or for threading into the building. The boom is positioned quicker by the 2 x 365° swivelling range of the turret.



Pump kit

Only the SX outriggers by SCHWING allows the longstroke pump kit P2525 with 2.50 m long pumping cylinders to be used in this class of machine. Advantage: 20% less strokes than with pump kits otherwise available in this class.



Concrete valve

The legendary low wear ROCK valve with its optimal geometry for low-friction concrete flow ensures low service and operating costs. Being fast and easy to clean, the S 38 SX Reptor is quickly ready for the next job.



Supply control

The water box can be filled and emptied, and the water pump, agitator, spray hose, high pressure cleaner and compressor, all controlled via the standardised supply control. This is the standard for all SCHWING truck-mounted concrete pumps for greater clarity and ease of operation.



S 38 SX Reptor Truck-mounted pump

SX o

The SX outriggers de SCHWING combine high rigidity and excellent stability. The minimum space required for the protected piston rod and internal hydraulic lines prevents damage and reduces wear.



Open hydraulic system

The open hydraulic system of the S 38 SX Reptor converts the engine power efficiently into pump power with little loss. Thus, the usual practice output rates can be realized with a fuel-saving engine speed below 1000 rpm.



Vector control

The machine operator can inspect machine data, operating conditions and settings on S 38 SX Reptor, changing various parameters, all through the intuitive VECTOR control. The integrated diagnostic system ensures safe operation and also reminds the operator when maintenance is necessary.



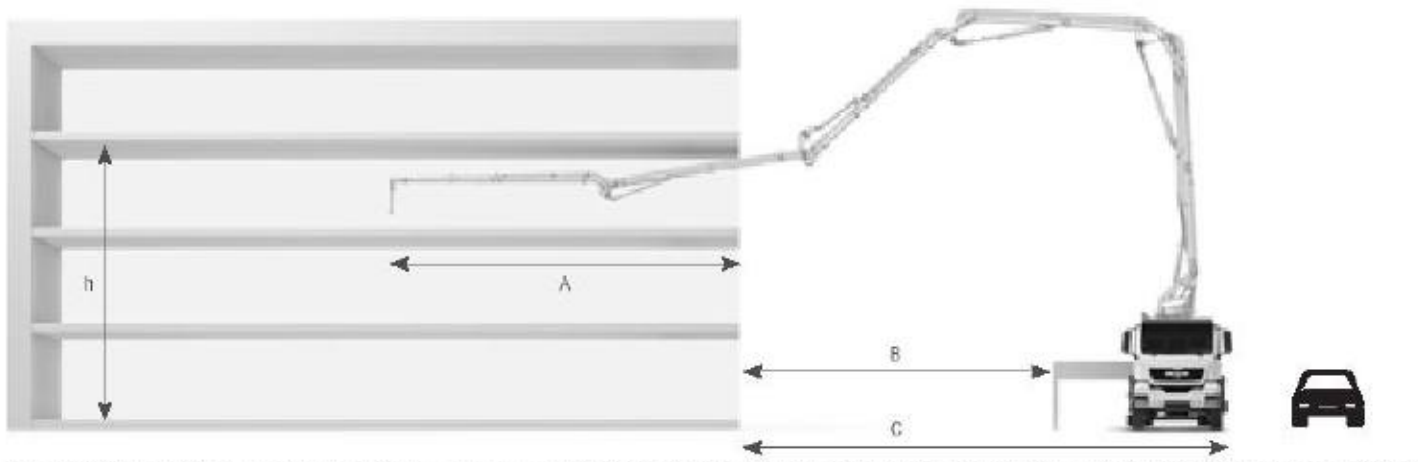
Remote control SC 30

The light weight, easy to use and comfortable SC 30 helps minimise fatigue, allowing the operator to focus on the job for extended periods. The powerful batteries guarantee an operating time of at least 8 hours.

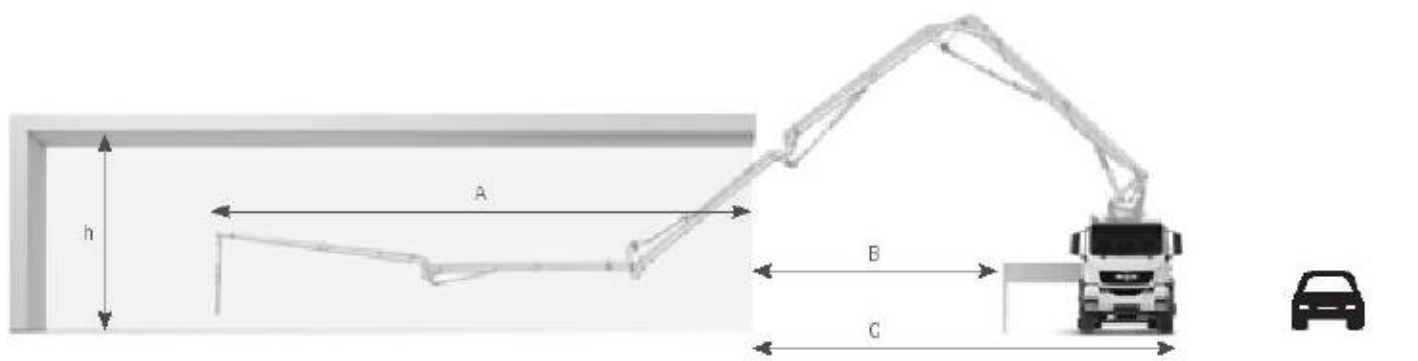


The Reptor boom. Exceptionally flexible.

The use of truck-mounted concrete pumps in halls and in front of buildings with retracted boom, requires much experience and permanent attention. The more flexible and easier it is to operate the boom of a concrete pump, the quicker and more safe such demanding concreting tasks can be mastered. With the large opening angles of its boom elements and the roll-folding, the Reptor boom of the S 38 SX is the ideal tool for such applications. Intuitive operability and extremely mobile: for more efficiency and safety on each construction site.



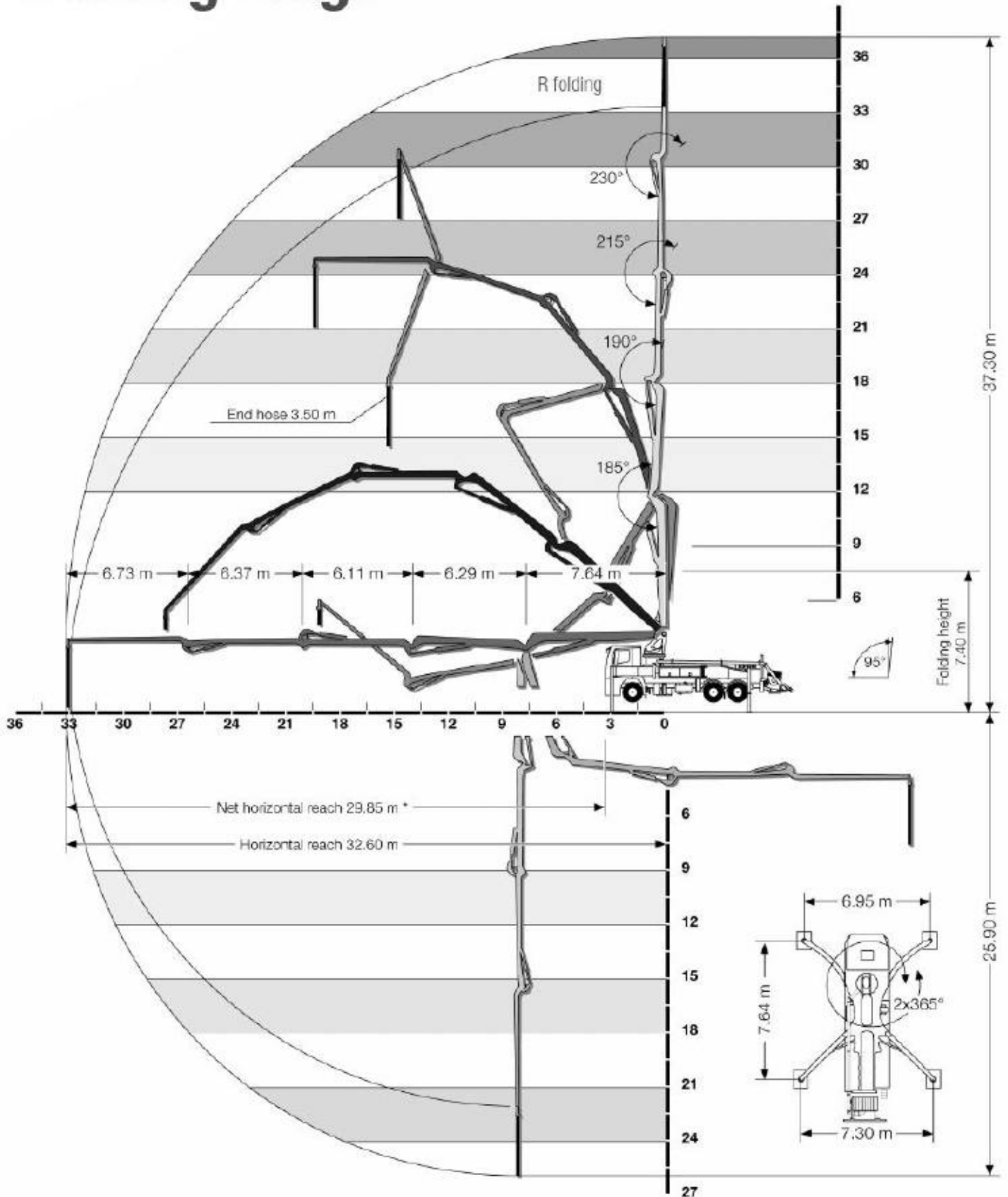
h Floor	A Horizontal reach in the floor	B Distance between outriggers and building	C Distance between vehicle outer edge and building
Ground floor (3 m height)	16.40 m	12.50 m	17.10 m
1st floor (6 m height)	18.40 m	10.50 m	15.10 m
2nd floor (6 m height)	20.40 m	8.50 m	13.10 m
3rd floor (12 m height)	20.40 m	6.50 m	11.10 m



Hall height h	A Vertical reach inside hall	B Distance between outriggers and hall	C Distance between vehicle outer edge and hall
5 m	22.50 m	6.50 m	11.10 m
6 m	23.50 m	5.50 m	10.10 m
7 m	24.50 m	4.50 m	9.10 m
8 m	32.60 m (max. horizontal reach)	Setup inside the hall possible (folding height: 7.40 m)	

S 38 SX Reptor Truck-mounted pump

Working range



* mounted on Mercedes-Benz Arocs

S 38 SX Reptor Truck-mounted pump

Options



High-pressure cleaner



Split end hose (1.00 + 2.50 m)



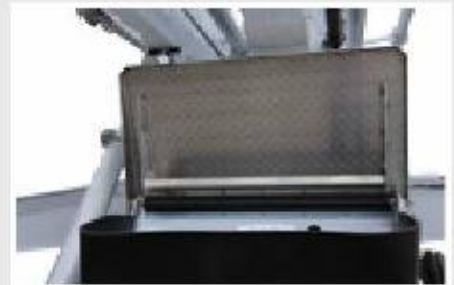
Central greasing system



Compressor (hydraulically driven)



Spraying unit for form oil



LED worklight for hopper area



LED worklights at end hose



Squared timbers in box



Auto drum for cleaning hose



Concrete shut-off valve



LED lighting for supporting area



Cargo box

S 38 SX Reptor Truck-mounted pump

Technical data

Performance					
Pump kit		P2023-110/75	P2023-110/75	P2025-120/80	P2525*
Drive	l/min	535	636	535	636
Delivery cylinders	mm	230 x 2.000	230 x 2.000	250 x 2.000	250 x 2.500
Concrete output max.	m ³ /h	136	161	136	162
Pressure on concrete max.	bar	85	85	85	85
Stroke rate max.	1/min.	27	32	23	22
Concrete valve		M-ROCK (Option: B-ROCK)	M-ROCK (Option: B-ROCK)	B-ROCK	B-ROCK
Hydraulic system					
Design		open system			
Hydraulic tank	l	370			
Boom		38 R Reptor			
Delivery line		DN 125			
Length of end hose	m	3.50 (Option: 1.00 + 2.50)			
Vertical reach	m	37.30			
Reach depth	m	25.90			
Horizontal reach	m	32.60			
Net horizontal reach	m	29.85 (mounted on Mercedes-Benz)			
Number of boom sections		5			
Height of joints (supported)	m	4.20 / 11.83 / 18.12 / 24.22 / 30.52			
Slewing range		2 x 365°			
Folding height	m	7.40			
Support					
Outrigger width, front	m	6.95			
Outrigger width, rear	m	7.30			
Outrigger load, front	kN	6x4	195	8x4	195
Outrigger load, rear	kN	6x4	195	8x4	205

*only in conjunction with a 4-axle chassis

SCHWING-STETTER ALWAYS CLOSE TO YOU



SCHWING concrete pumps. Efficiency as standard.



SCHWING
Stetter

SCHWING GmbH
Heerstrasse 9-27 · 44653 Heerlen, Germany
Fon +49 23 25 - 987-0 · Fax +49 23 25 - 72922
www.schwing-stetter.com · info@schwing.de

Stetter GmbH
Dr.-Karl-Lenz-Strasse 70 · 87700 Memmingen, Germany
Fon +49 83 31 - 78-0 · Fax +49 83 31 - 78 275
www.schwing-stetter.com · info@stetter.de

Subject to technical and dimensional modifications. Illustrations are non-binding. The exact standard specification, the scope of delivery and the technical data are detailed in the offer.