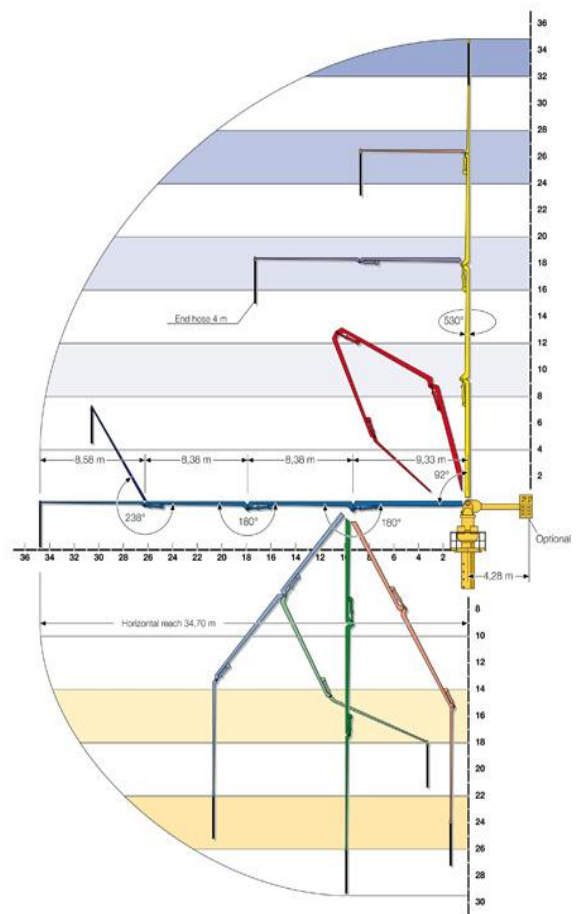
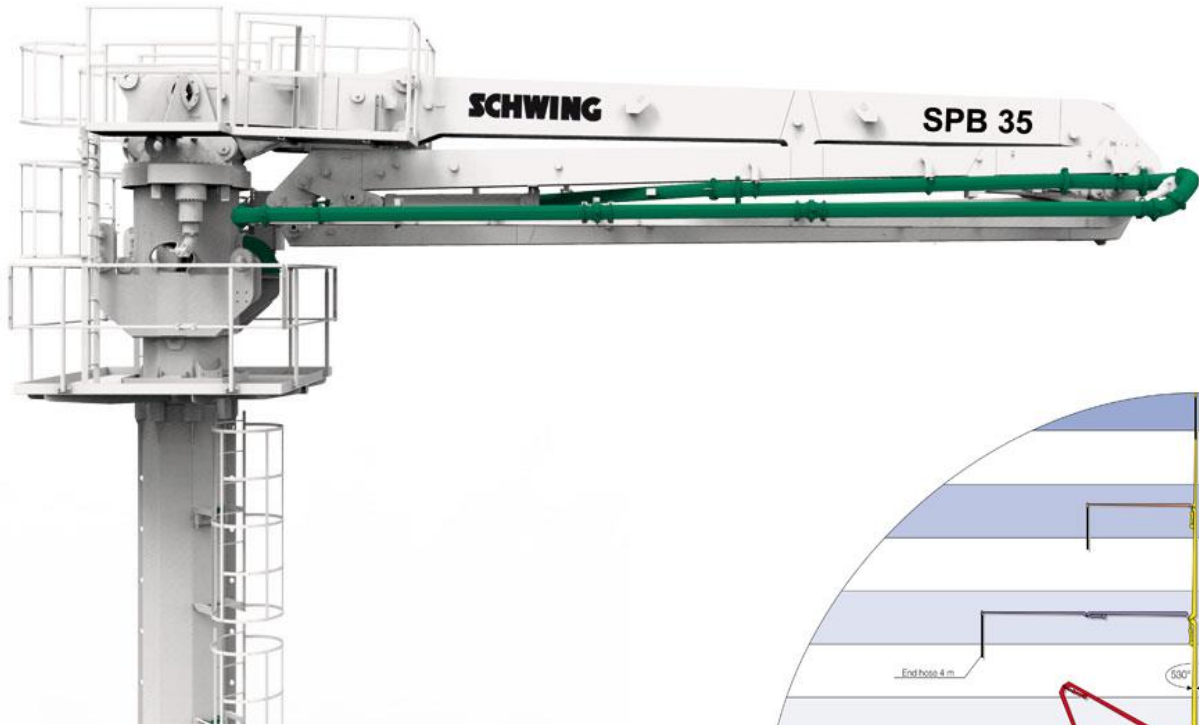


SEPARATE PLACING BOOM SPB 35



Technical Data

Horizontal reach	35 m
Number of arms	4
Pipeline dia.	DN 125
End hose	4 m
Weight	8.350kg
Optional split boom	yes
Optional counterweight	6.000 kg
max. free-standing height	
on octo-column (without C/wt)	14 m
on octo-column (with C/wt)	20 m