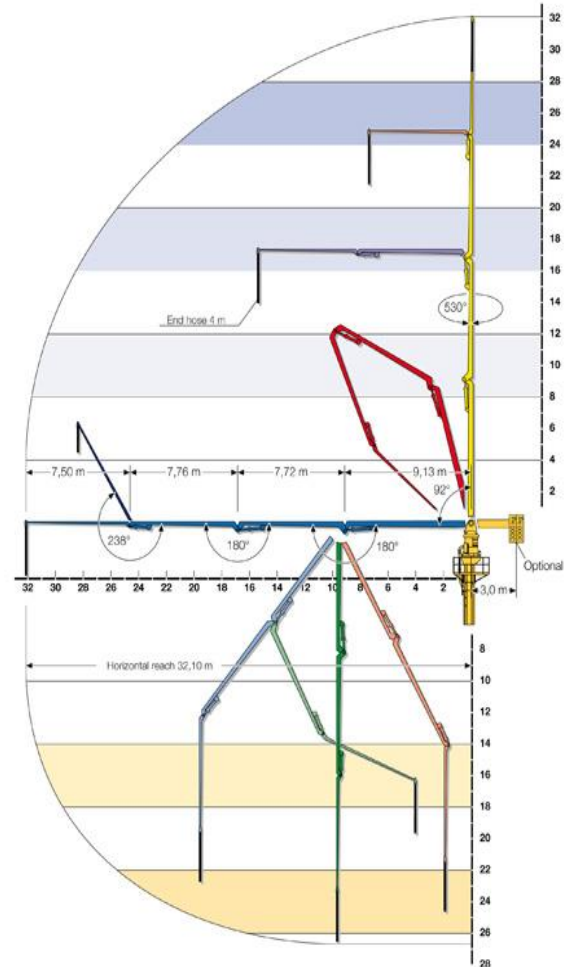
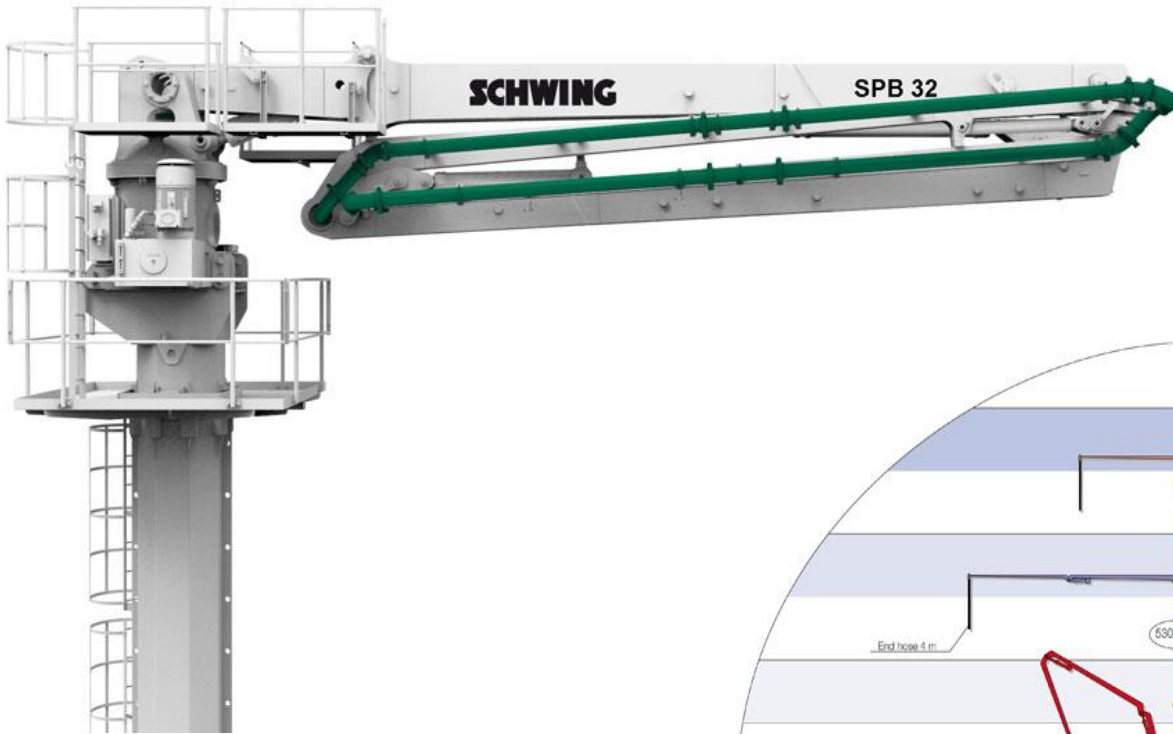


SEPARATE PLACING BOOM SPB 32



Technical Data

| | |
|-------------------------------|----------|
| Horizontal reach | 32 m |
| Number of arms | 4 |
| Pipeline dia. | DN 125 |
| End hose | 4 m |
| Weight | 7.100 kg |
| Optional split boom | yes |
| Optional counterweight | 6.000 kg |
| max. free-standing height | |
| on octo-column (without C/wt) | 18 m |
| on octo-column (with C/wt) | 20 m |